

## *Blade ATV 16 m 40*

### *Technical information*

#### **General Datas**

Blade type	Pitch and/or Active Stall
Rotation	clockwise
Airfoil	FX84-W series

#### **Geometrical Datas**

Blade length	16.40 m
max. chord	2,060 m
Tip chord	0,660 m
Twist	12,9 °
Blade weight	1100 kg
centre of gravity	5,140 m
Bolt circle diameter	0,818 m

#### **Structural Datas**

Material	Carbon/Glass Epoxy
Number of spar webs	2
Lightening protection	yes
Root connection	36 M24 inserts
1st flap frequency	2,44 Hz
1st lag frequency	4,13 Hz

16390.00

4633.62

Trailing edge

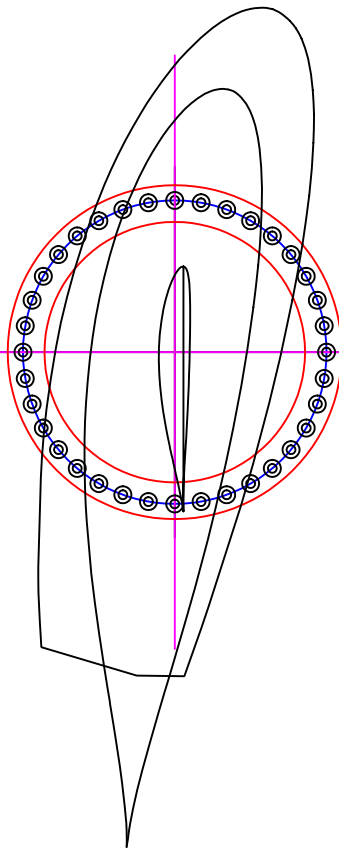
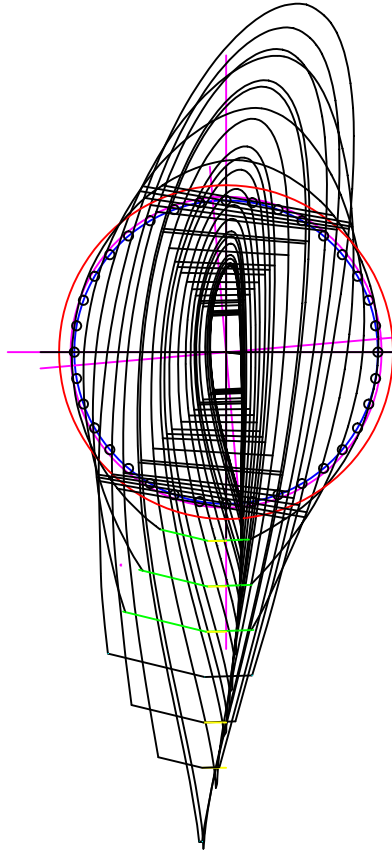
2077.00

1833.24

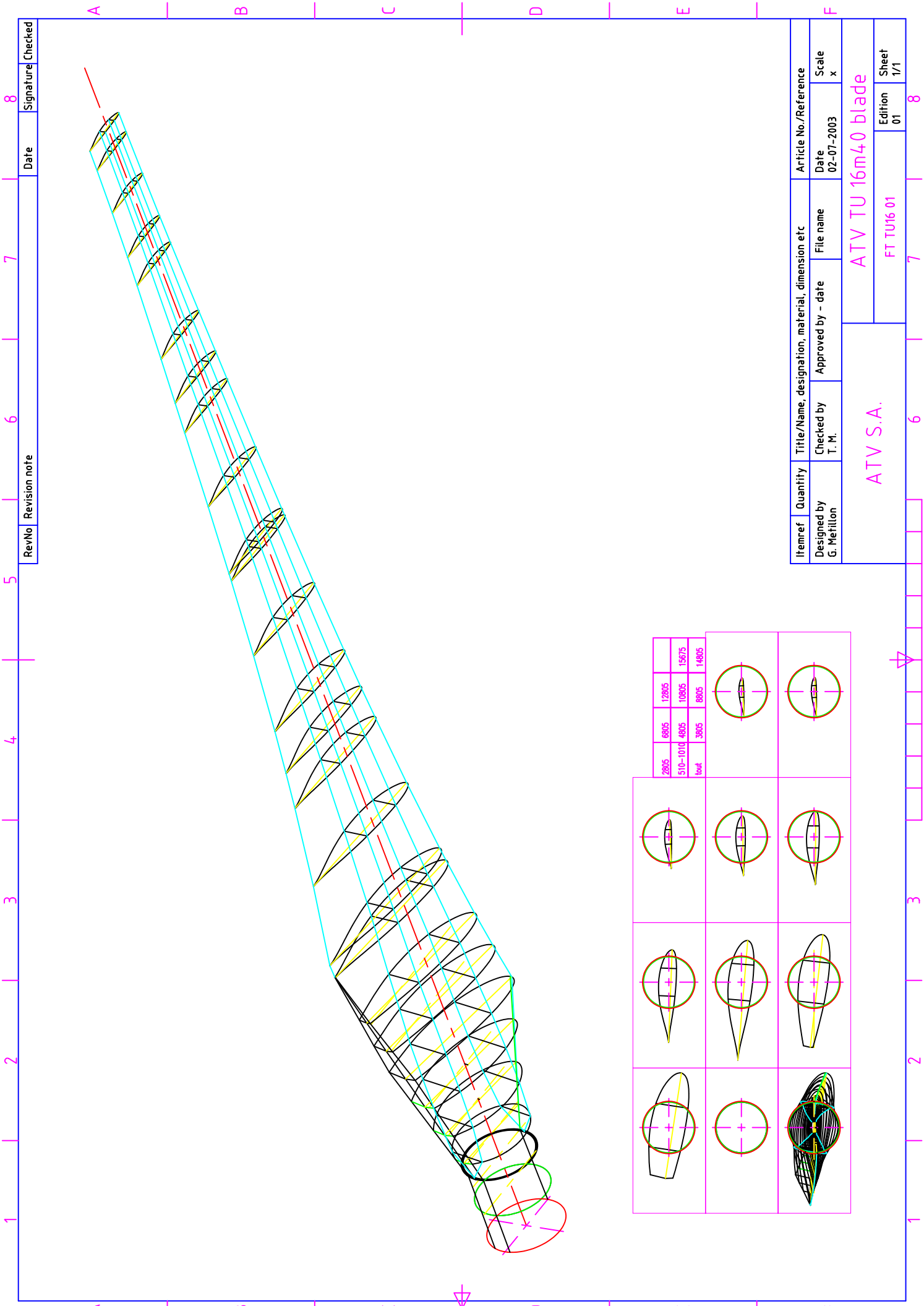


2695.00

Leading edge



Itemref	Quantity	Title/Name, designation, material, dimension etc	Article No./Reference
Designed by O.C. - G.M.	Checked by	Approved by - date	Date 05-08-2002
		File name	Scale x
ATV S.A.		ATV TU16m40 Blade	
		Edition	Sheet
		01	1



2805	6805	12805	510-1010	4805	10805	15875	3005	8805	14805
leaf									

RevNo	Revision note	Date	Signature	Checked
8				

Itemref	Quantity	Title/Name, designation, material, dimension etc	Article No./Reference
Designed by G. Meillon	Checked by T. M.	Approved by - date	Date 02-07-2003
ATV S.A.		File name	Scale x
		ATV TU 16m40 blade	
		FT TU16 01	Edition 01
			Sheet 1/1